



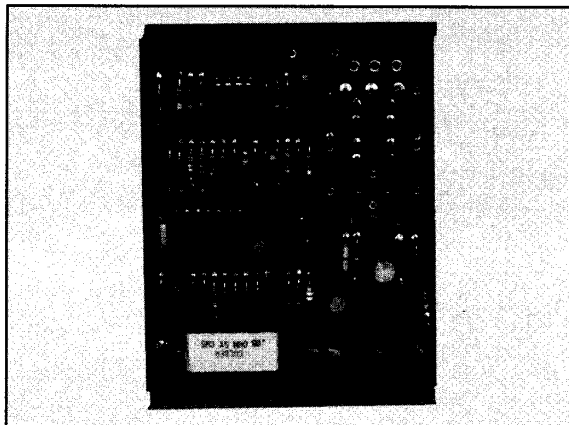
**SINGLE OR THREE PHASE CURRENT MONITORING SERIES C5-323**(2,3 or 4 wire current or volatge output)

**APPLICATION:**

The BEC Model C5-323 offers an accurate, reliable, and low cost means to monitor load (current) on chillers, compressors, supply fans, pumps, transformers, and other industrial equipment. The transducer can also be installed for submetering purposes.

**DESIGNED FOR:**

- \*Automation computer systems
- \*Energy management computer systems
- \*Process control computer systems
- \*Analog monitoring equipment
- \*Ease of installation



**DESCRIPTION:**

The C5-323 Current Transducer accepts a 0-5 Amp input from any standard current transformer and provides an accurate, linear, and high level output. The transducer incorporates industrial quality, state-of-the-art intergrated circuits to perform scaled RMS to DC conversion with a high impedance instrumentation amplifier to provide reliable, temperature compensated, and accurate output with "loading" the circuit transformer.

The circuit is factory calibrated but Zero and Span trimmers are provided to adjust the output if necessary.

**SPECIFICATIONS**

Input	0-5 Amps RMS 50/60 Hz nominal
Input resistance	.050 Ohms
Supply voltage	See ordering information
Output	See ordering information
Accuracy	+ or - 0.5% Full scale output@ 25°, + or - 25°C
Temperature-Operating	0 to 50°C
Temperature-Storage	-40 to 70°C
Response time	400 msec. F5 Output
Enclosure	See ordering information
Termination	Screw terminals

**ORDERING INFORMATION:**

<p>MODEL C5-323    -    <u>W</u>    -    <u>2</u></p> <p>ENCLOSURE _____</p> <p>W. Nema-4, Water/oil tight</p> <p>X. No enclosure, Snap-track</p>	<p>OUTPUT _____</p> <p>1. 4-20 mA (2 wire)</p> <p>2. 1-5 Vdc (3 wire) (resister to ground)</p> <p>3. 4-20 mA (4 wire)</p> <p>4. 0-5 Vdc (4 wire)</p> <p>5. 0-10 Vdc (4 wire)</p>	<p>_____ <u>A</u> _____ *</p> <p>SUPPLY POWER</p> <p>A. 24 Vdc (4-20 mA, 1-5 Vdc)</p> <p>B. 24 Vac (0-5 Vdc, 4 wire) or Vdc (0-10 Vdc, 4 wire) (4-20 mA, 4 wire)</p> <p>C. 115 Vac (Same as "B")</p>
<p><b>CURRENT TRANSFORMERS</b></p> <p>See BEC Bulletin B-1123A and order as seperate item by appropriate part number.</p>		



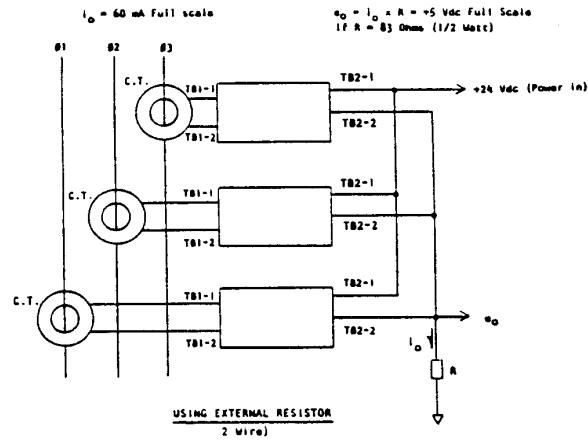
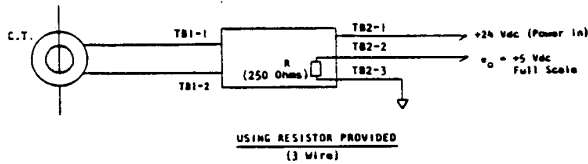
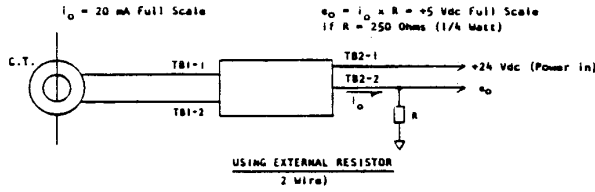


# ENGINEERING PRODUCT SPECIFICATION RELEASE

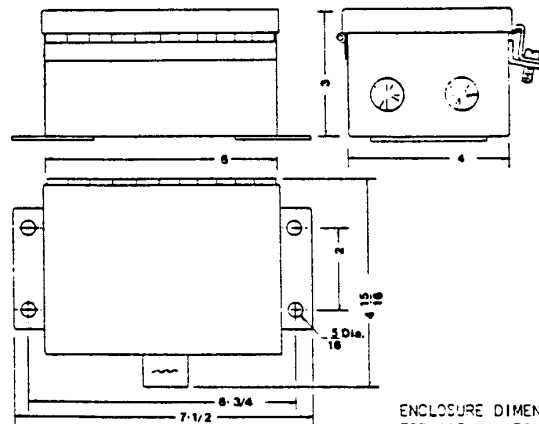
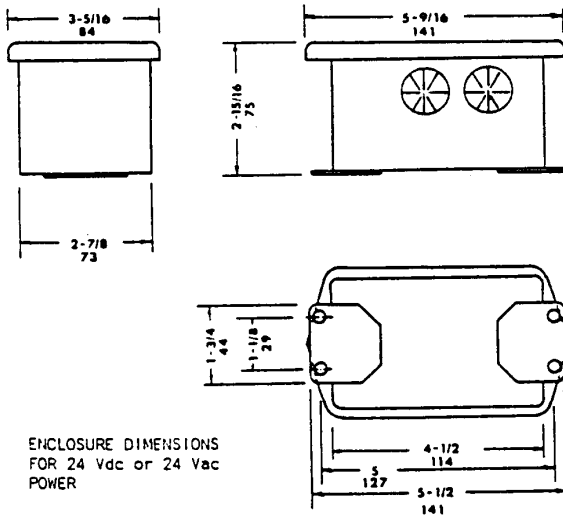
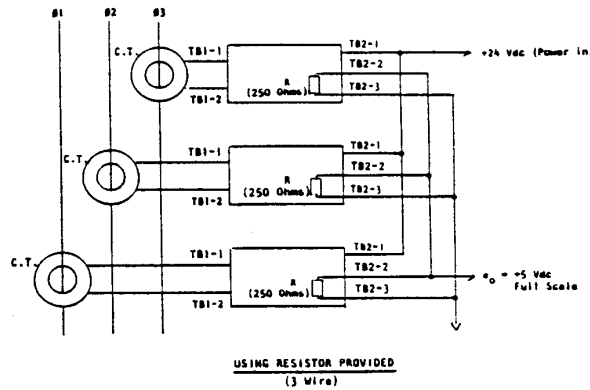
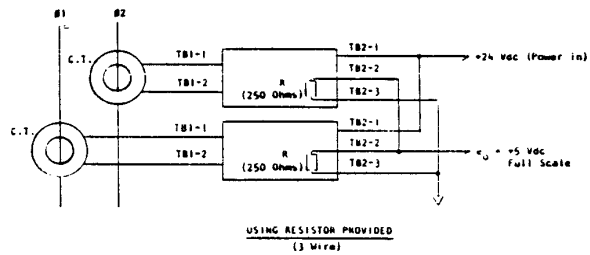
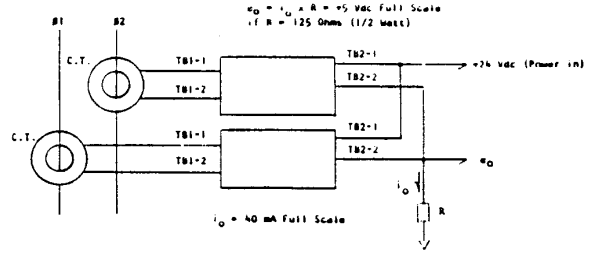
## TRANSDUCER CURRENT 10 OR30 CURRENT MONITORING

E4-11323.S

### 2-WIRE CURRENT TRANSDUCER HOOK-UP SUGGESTIONS



CONSULT FACTORY FOR OTHER WIRING SCHEMES



BEC CONTROLS CORP.  
[WWW.BECCONTROLS.COM](http://WWW.BECCONTROLS.COM)