



## ● TRANSMITTER, DIFFERENTIAL PRESSURE (WET OR DRY)

PRESSURE RANGES, 0/-30"HgD TO 0/1500 PSID

**SERIES P-48** (4-20mA, 2-Wire; 4-Wire Current or Voltage Output)

### ● DESCRIPTION

The BEC P-48 Pressure Transmitter has a pressure wetted surface of 17-4PH stainless steel. Pressure port fittings are also available as a stainless steel 1/4" NPT male for a completely wetted surface of only stainless steel. 304 stainless steel is also available.

The low level output of the sensing element is amplified, temperature compensated and conditioned for a linear, stable output over the specified pressure span.

### ● APPLICATIONS

BEC P48 Pressure Transducers provide an accurate, reliable and economical means for monitoring differential pressures in HVAC automation, pneumatic systems and process control. The output can be easily interfaced with chart recorders, data loggers, computerized monitoring and control systems.

- Building/Duct Differential Pressure
- Air/Liquid Flow Monitoring
- Air Filter Pressure Differential
- Process Control
- HVAC Automation/Variable Speed Drives
- Level Head Pressure

### ● FEATURES

#### STANDARD

- 100% Solid State
- Diff. Ranges: 0/-30" HgD to 0/1500 PSID
- Temp. Compensated Linear Analog Output
- Reverse Polarity Protected
- Zero and Span Adjustments

#### AVAILABLE OPTIONS

- 24 Volt AC Power
- 115 Volt AC Power
- Integral LCD Read-out

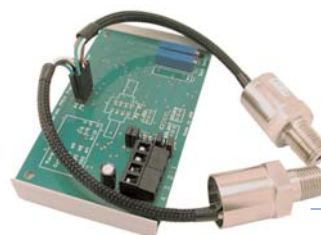
Transmitter with  
Nema 4 enclosure



Transmitter with display



Transmitter board only  
for panel mounting



### ● SPECIFICATIONS

Proof Pressure	90 PSI or 2X FS
<b>Temp. Range Sensing Module</b>	
Operating	-40 Deg C/120 Deg C
Compensated	-30 Deg C/80 Deg C
Transmitter	0 Deg C/50 Deg C
Accuracy	+/- 0.75% FS
Zero & Span Adjustment	+/-10%
<b>Thermal Stability</b>	
Zero	+/-0.02%/Deg C
Span	+/-0.02%/Deg C
Response Time	100 milliseconds
Humidity Effects	5-99% RH Non-Condensing
Media Compatibility	Consult Factory
Shock	+/-0.05% FS for 100 g's, 20 milliseconds
Vibration	+/-0.1% FS for 0-2000 Hz, 20g's
Stability 1 Year	+/-0.3% Span/Year
(With Existing Zero/Span Potentiometers)	

All specifications are subject to change without notice.  
All sales subject to standard terms and conditions.  
© BEC Controls Corp. 2011 Rev. 09/20/11

# TRANSMITTER, DIFFERENTIAL PRESSURE (WET OR DRY)

PRESSURE RANGES, 0/-30" HgD TO 0/1500 PSID

**SERIES P-48** (4-20mA, 2-Wire; 4-Wire Current or Voltage Output)

For  
Commercial  
and Industrial  
use only

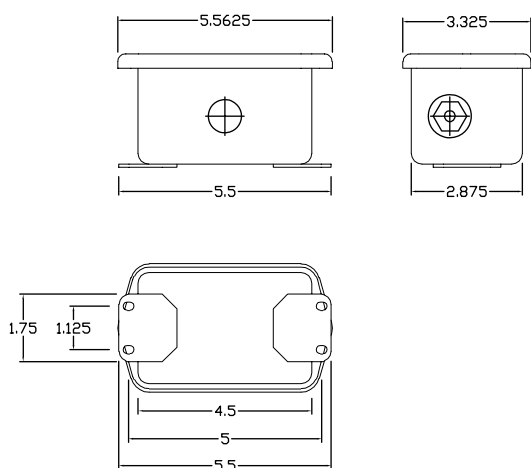
## ORDERING INFORMATION

D	P8		48	W	B	0/5 PSI	A	2
<b>REFERENCE</b> D. Diff. Ref.	<b>MFGR'S CODE</b> (Assigned by Factory)		<b>MODEL SERIES</b> (Assigned by factory)	<b>ENCLOSURE</b> X. No Enclosure W. Nema-4, Weatherproof Request	<b>OUTPUT</b> A. 4-20 mA (4-Wire) B. 4-20 mA (2-Wire) C. 1-5 Vdc (4 Wire) D. 0-5 Vdc (4-Wire) E. 0-10 Vdc (4-Wire) Request	<b>RANGES</b> 0 to 5 PSID 0 to 10 PSID 0 to 15 PSID -15 to 15 PSID 0 to 30 PSID -15 to 45 PSID 0 to 60 PSID 0 to 100 PSID 0 to 150 PSID 0 to 200 PSID 0 to 300 PSID 0 to 500 PSID 0 to 750 PSID 0 to 1000 PSID 0 to 1500 PSID Request	<b>POWER</b> A. 24 Vdc B. 24 Vac/dc C. 115 Vac D. 12 Vdc Request	<b>MEDIA</b> 1. Air 2. Water, oil, fuels, lubricants, etc. 3. Freons 4. Steam, soap 5. Caustic vapors 6. Request  (Media compatibility should be confirmed before use.)
	<b>SPECIAL REQMTS</b> R. Inverted Output L. LCD Display (Integral) M. SS Male 1/4" NPT fittings							

## DIMENSIONS

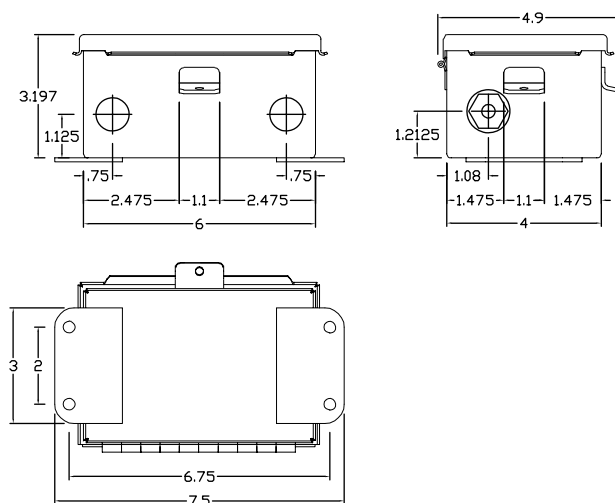
CONSULT FACTORY FOR CRITICAL MOUNTING DIMENSIONS ALL DIMENSIONS IN INCHES

ENCLOSURE STYLE "W" (Nema-4, -12, -13)  
(Transmitter without 115 VAC Power)



ENCLOSURE STYLE "W1" (Nema-4, -12, -13)  
(Transmitters requiring any of the following:)

- 115 VAC Power



All specifications are subject to change without notice.  
All sales subject to standard terms and conditions.  
© BEC Controls Corp. 2011 Rev. 09/20/11