



MINIATURE SIDE MOUNT LIQUID LEVEL SWITCH SERIES S-20

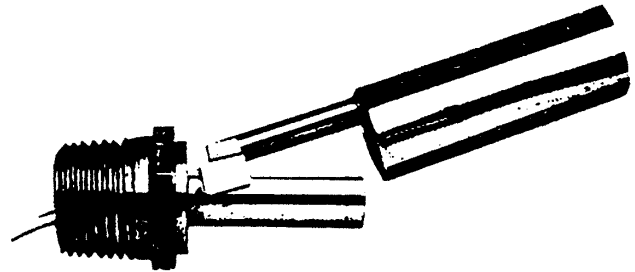
SIMPLE MOUNTING
RELIABLE OPERATION

The BEC CONTROLS miniature side mounted liquid level control can be mounted from inside or outside to simplify installation. The side mounted switch is available in PVC, nylon, polypropylene and stainless.

The Switch Point is located at the center of the mounting plug to simplify installation. And by merely inverting, the switch operation can be changed to normally closed or normally open.

Our side mounted controls can be used in oils, chemicals and water and can be placed internally or externally. Their use in high volume OEM applications and high and low temperatures makes them extremely versatile.

BEC CONTROLS makes switches with another very important feature. Our stainless steel switch is available with bulk head mounting to conveniently fit a variety of applications. These switches can also be supplied in a 1/2 inch NPT for internal or external mounting. Their use in corrosive materials and high temperatures make them another popular addition to our line of fine level controls.



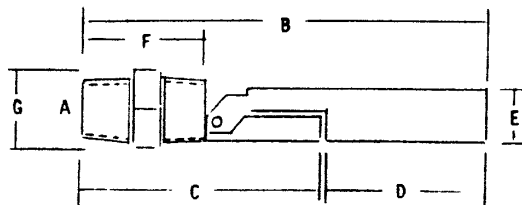
SPECIFICATIONS

	Specific Gravity	Maximum Pressure	Switch Rating	Lead Wire	Maximum Temperature
Polypropylene S-S20-PP	.5	50 PSI	50 Watt	22 ga	100°F
PVC S-S20-PVC	.5	100 PSI	50 Watt	22 ga	100°F
Nylon S-S20-N	.5	100 PSI	50 Watt	22 ga	100°F
Stainless Stl. S-S20-SS	.7	70 PSI	50 Watt	22 ga	200°F

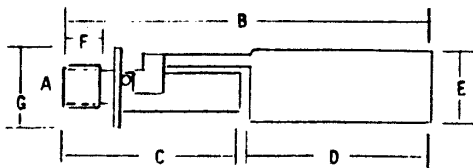
DIMENSIONS

	A*	B	C	D	E	F	G
Polypropylene	3/8"	4-1/4"	2-1/2"	1-3/4"	1/2"	2-1/2"	3/4"
PVC	3/8	4-1/4	2-1/2	1-3/4	1/2	2-1/2	3/4
Nylon	3/8	4-1/4	2-1/2	1-3/4	1/2	2-1/2	3/4
Stainless	1/8	3-1/4	1-7/8	1-7/8	11/16	1/2	25/32

* B.S.P. Thread Available
SPDT Option in 10 Watt Rating



INSIDE/OUTSIDE MOUNTING



BULKHEAD MOUNTING

ELECTRICAL

VOLTAGE 0 - 240v AC/DC
 MAX. SWITCHING CURRENT 0.5 Amp.
 MAX. LOAD 50 Watts
 SPST REED SWITCH Float reversible for N.C or N.O. operation

